

MagCore® Nucleic Acid Extraction Kits

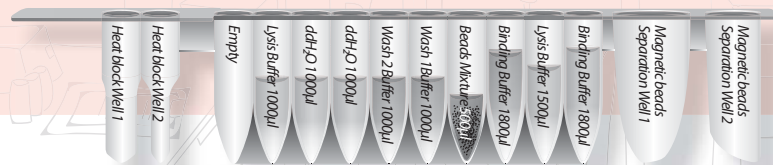


For extraction of cfDNA from 4ml plasma or serum

MagCore® Circulating DNA large volume kit is designed for purifying free circulating DNA from human serum or plasma using MagCore® automated extraction systems. The kit contains all required reagents and labware for automated purification based on magnetic-particle technology. Reagents necessary for a complete process are supplied and pre-filled in the cartridges, which can be easily loaded into the MagCore® instrument.

115

MagCore® Circulating DNA large volume kit (4ml)



Features

1. High performance of purified DNA in downstream applications such as qPCR.
2. Efficient recovery of fragmented DNA
3. Pre-filled and sealed buffer cartridges prevent contamination.
4. No phenol or chloroform extraction
5. Efficient removal of contaminants and inhibitors.

Applications

The MagCore® Plasma DNA Extraction Kit efficiently purifies free circulating DNA.

Sample types include:

1. Human plasma
2. Human serum

High quality DNA available for various downstream applications, including:

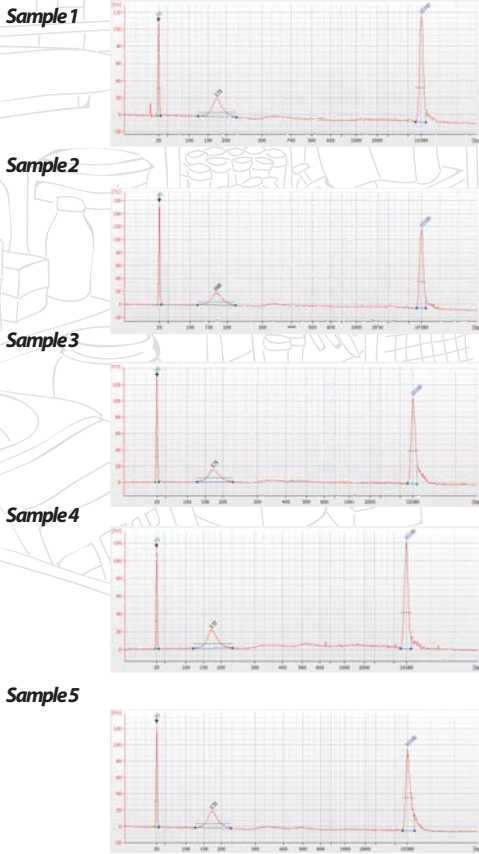
1. PCR and real-time PCR
2. Next Generation Sequencing (NGS)

Performance

High stability of free DNA

Quality and quantity analysis of the free DNA by Agilent 2100 Bioanalyzer. It is shown by the evidence that free DNA of high quality and stability is possible to extract from 5 different healthy people plasma samples by using MagCore products.

Sample ID	Sample type	Plasma (ml)	Qubit (ng/ul)	Ct value (GAPDH gene)	Bioanalyzer Conc. (pg/ul)	35 bp marker Conc. (pg/ul)	10380 bp marker Conc. (pg/ul)
1	Human plasma	4	0.262	18.52	127.21	125	75
2	Human plasma	4	0.250	18.59	124.62	125	75
3	Human plasma	4	0.220	18.78	111.11	125	75
4	Human plasma	4	0.290	18.45	153.24	125	75
5	Human plasma	4	0.278	18.49	130.97	125	75

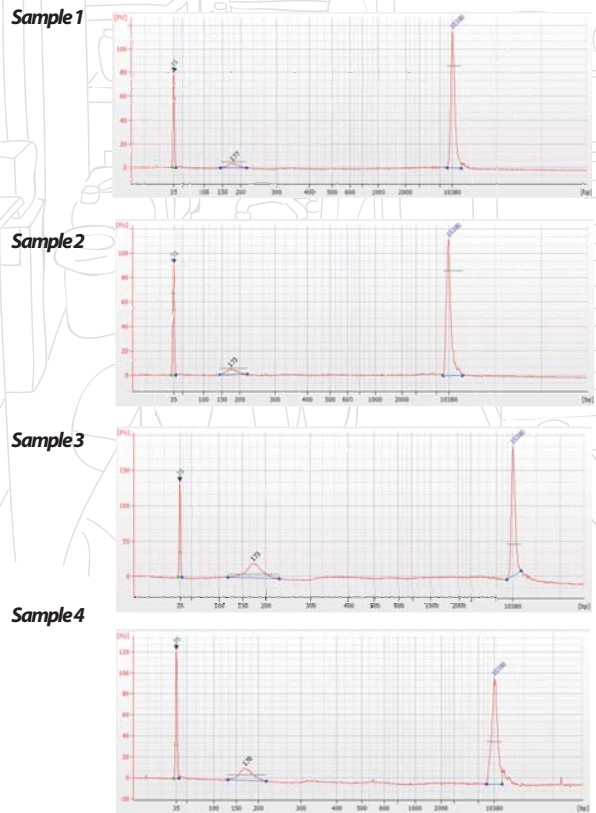


Comparison of free DNA from 1.2 ml and 4 ml plasma

Quality and quantity analysis of the free DNA by Agilent Bioanalyzer 2100. Superior quality DNA are available from plasma samples by using MagCore products.

Sample ID	Kits Code	Sample type	Plasma (ml)	Qubit (ng/ul)	Ct value (GAPDH gene)	Bioanalyzer Conc. (pg/ul)	35 bp marker Conc. (pg/ul)	10380 bp marker Conc. (pg/ul)
1	105	Human plasma	1.2	0.061	23.86	24.70	125	75
2	105	Human plasma	1.2	0.058	23.96	22.98	125	75
3	115	Human plasma	4	0.203	20.04	117.0	125	75
4	115	Human plasma	4	0.194	20.26	104.7	125	75

Code 105: MagCore® Plasma DNA Extraction Kit
Code 115: MagCore® Circulating DNA large volume kit



MagCore® Automated Nucleic Acid Kits Specification

Cartridge Code	MagCore® Super/HF16 Plus/Plus II				MagCore® HF16/Compact			
	Cat.No.	Cat.No.	Cat.No.	Running Time	Cat.No.	Cat.No.	Cat.No.	Running Time
115	24 preps	72 preps	96 preps	146 min (sample volume: 4000 µl) *optical detection is not provided	24 preps	72 preps	96 preps	146 min (sample volume: 4000 µl)

Enzyme Selection Guide

Product	Contents	Cat. No.
Proteinase K Set	11 mg Proteinase K, 1.25 ml PK Storage Buffer	PK011
RNase A	50 µl RNase A (50 mg/ml)	RN050
	130 µl RNase A (50 mg/ml)	RN130



FDA (10055336) registered and CE-IVD certified (Instruments & Reagents)
Manufactured in accordance with quality system requirements that comply with ISO 13485 standards and QSR

